



JOHN HARDY

ARTISAN HANDCRAFTED JEWELRY





## ARTISAN HANDCRAFTED SINCE 1975

Our fine jewelry is handcrafted – from sketch to final polish – using Balinese techniques passed down through generations.

## RICH IN QUALITY AND CHARACTER

From our workshop in Ubud, Bali, our designs represent an ongoing collaboration between Creative Director Hollie Bonneville Barden and our master artisan collective. Handcrafted details make each piece truly one of a kind – with reclaimed metals and ethically sourced gemstones that display natural inclusions and distinct hues.

## A SOULFUL EVOLUTION

Drawing inspiration from Bali's elemental beauty, we are guided by our heritage of artistry and reverence for nature in everything we do. Imbued with both the hand of the artisan as well as soul, this collection of talismans each tells the story of its origins and invites you to celebrate your own.







# LINKS THAT BIND

As one of our first collections, Classic Chain® put John Hardy on the international map – but it could only have been developed in Bali, where women have traditionally woven flower offerings for the gods as well as cloth and baskets as part of daily life, empowering them to bring prosperity to their families. Today, we preserve the practice at our workshop in Ubud, Bali, where solely women weave Classic Chain® by hand using techniques passed down through generations with reclaimed metals.





Introducing

# TIGA

Balinese for 'Three'



Originally developed in the 1980s by our master artisans in Bali, Tiga Classic Chain returns with a modern pyramidal form that adds height to your stack and locks with a reimagined double-faceted clasp.

Gem-set pavé clasps add another opulent facet to the striking chain.



To achieve Tiga Classic Chain's original structure requires the expertise of our most senior artisans. Its complex finishing process involves precise hammering and pulling of the chain through steel drawing plates to align physical weight with visual impact.

8

Tip: This bold silhouette and graphic detail adds dimension to your stack.







Our chain is hand woven by a team of women artisans, link by link. Community is both a constant source of inspiration and the driving force behind our designs. The female artisans who weave our Classic Chain® exemplify this connection.



In Balinese culture, handweaving ornate palm frond-and-flower offerings is a daily ritual that underscores the importance of the blessings in your life.

“ We’ve worked together for a long time, and these are friends, almost like a family. We share our problems. We’re very comfortable together. Sometimes we argue, but then we come together again, like sisters.”

NI WAYAN



## MEET THE WEAVERS





# CHAIN EFFECT

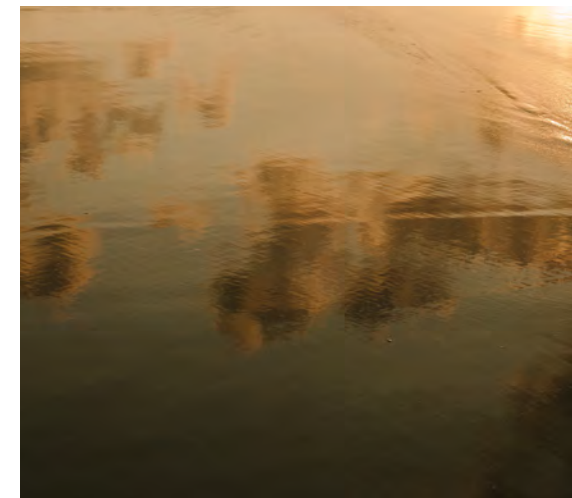
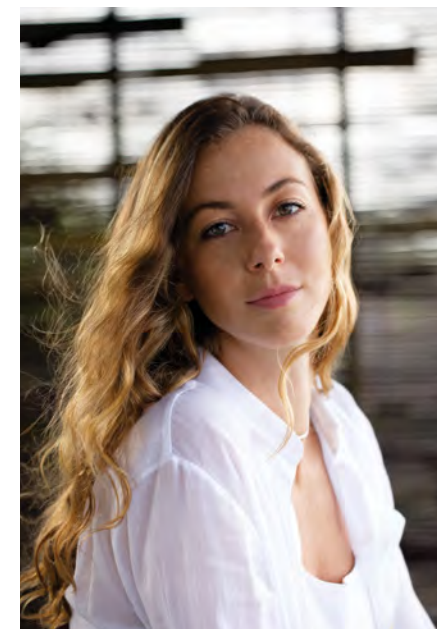
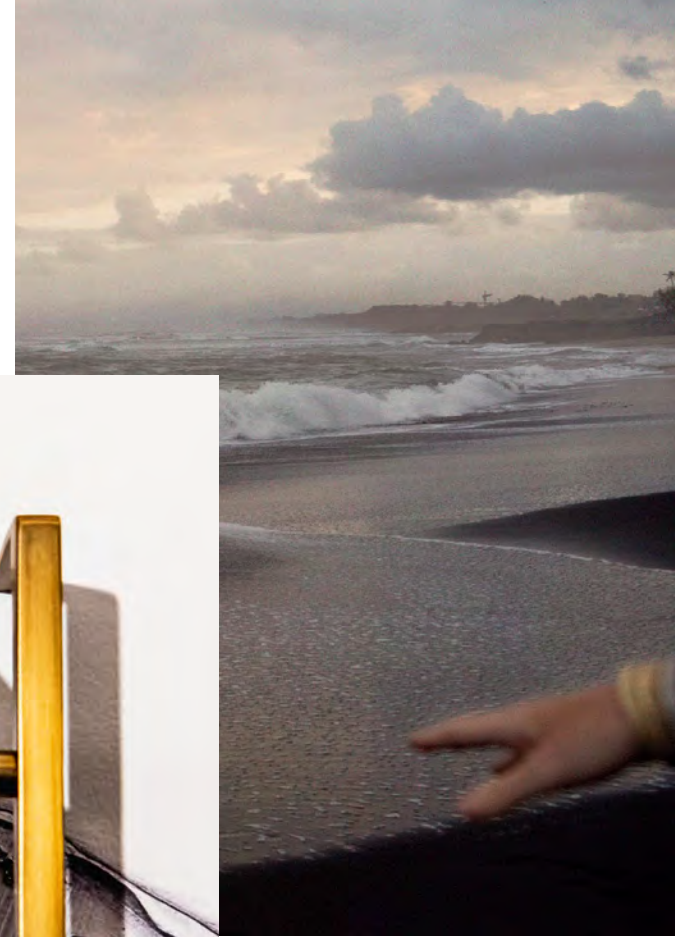
The Asli Classic Chain Link™ takes its name from the Balinese word for “*origin*” with inspiration from an individual link of our handwoven Classic Chain®.

Hand sculpted into stations, chain links and transformable pieces, this chain is made to mix and match, layer and stack.

The new Men’s Asli Half-Link marries Bali’s artistic heritage with modern sculptural techniques.







# JOHN HARDY WAS BORN ON A VOLCANIC ISLAND

“ Bali is a collision of beauty and strength as the black sands meet the ocean and lava flows into the water. The destructive yet forging beauty of nature and the drama of creation continues to fascinate me. Molten lava is the source of our materials, and our seed of inspiration.”

HOLLIE BONNEVILLE BARDEN  
Creative Director





17

Introducing

# LAHAR

Balinese for 'Lava'



A new collection from Creative Director Hollie Bonneville Barden charged with the soul and vitality of Bali, and inspired by nature's untamed elegance.

Lahar unites molten metals and wild diamonds to ignite emotion and harness the raw power of the island's elemental forces.





# WILD DIAMONDS

Unapologetically nonconformist, wild diamonds are the purest form of these precious stones, complete with organic inclusions that impart an icy hue.

18



“The one-of-a-kind nature and mesmerizing shades of wild diamonds radiate a magnetic mysticism.”

HOLLIE BONNEVILLE BARDEN  
Creative Director





20



# MODERN HERITAGE

Inspired by time-honored Balinese craft and our rich archives steeped artistry, each innovative handcrafted motif is infused with the island's soul-awakening energy.





Introducing

# KERIS DAGGER

In the ancient kingdom of Indonesia, the Keris Dagger was a sanctified heirloom (*pusaka*) used in battle and a potent symbol of heroism and power.

Our Keris Dagger pendants and rings unite this lineage with the lost art of forging Damascus steel. Each is handcrafted in fire by layering, hammering, and folding reclaimed gold and silver, juxtaposing ancient and modern, beauty and strength.



“ Making things by hand is very important, because machines just can’t make certain forms. With the hand, there is soul (*taksu*), so our skill and soul enters the piece we are making.”

WAYAN PATER

Second-Generation Master Artisan

## OUR ARTISAN COMMUNITY

24

Sustainability is our living legacy.

Not only do we use reclaimed gold and silver as well as ethically vetted stones, we prioritize sustaining our community and the Balinese artisan techniques that have been passed down through generations.

A family of three generations with John Hardy







# GIFTS THAT EMPOWER

Holiday gifts under \$1000.  
Created with intention, designed to inspire.





# RING BEARER

Handpicked and handcrafted to  
empower the ones who wear it.



28







31



# A CONSCIOUS CURATION

From ethically sourced stones to reclaimed gold and silver, sustainability is threaded into everything we do.





# SINGULAR STRENGTHS

Celebrate your blessings this holiday season with bold jewels handmade in Bali.





Front Cover	<b>Tiga Classic Chain 8MM Bracelet.</b> Sterling Silver with Black Sapphire \$895. <b>Tiga Classic Chain 6.5MM Bracelet.</b> 18K Gold with Diamond Pavé (0.35ct) \$9,995. <b>Tiga Classic Chain 6.5MM Bracelet.</b> Sterling Silver \$495. <b>Tiga Classic Chain 8MM Bracelet.</b> Sterling Silver with Diamond Pavé (0.44ct) \$1,695. <b>Tiga Classic Chain Overlap Ring.</b> 18K Gold \$2,495. <b>Classic Chain 5MM Bracelet.</b> 18K Gold \$5,100. <b>Classic Chain Bracelet.</b> Sterling Silver \$450. <b>Classic Chain Extra-Large Hoop Earrings.</b> Sterling Silver \$495.
6	<b>Tiga Classic Chain 6.5MM Bracelet.</b> Sterling Silver with Diamond Pavé (0.35ct) \$1,395. <b>Tiga Classic Chain 6.5MM Bracelet.</b> 18K Gold with Diamond Pavé (0.35ct) \$9,995. <b>Tiga Classic Chain 8MM Bracelet.</b> Sterling Silver \$695. <b>Classic Chain Knife Edge 8MM Hinged Bangle.</b> Sterling Silver \$750. <b>Tiga Classic Chain 8MM Bracelet.</b> Sterling Silver with Black Sapphire \$895. <b>Tiga Classic Chain 6.5MM Bracelet.</b> Blackened Sterling Silver with Diamond Pavé (0.35ct) \$1,495. <b>Tiga Classic Chain 8MM Bracelet.</b> Sterling Silver with Diamond Pavé (0.44ct) \$1,695.
7	<b>Tiga Classic Chain 8MM Bracelet.</b> Sterling Silver \$750. <b>Tiga Classic Chain 8MM Bracelet.</b> Blackened Sterling Silver \$795. <b>Classic Chain 11MM Bracelet.</b> Sterling Silver \$975. <b>Asli Classic Chain 7MM Link Bracelet.</b> 18K Gold \$6,900. <b>Tiga Classic Chain 8MM Bracelet.</b> Blackened Sterling Silver \$795. <b>Tiga Classic Chain 8MM Bracelet.</b> Sterling Silver \$750.
8	<b>Dot Ring.</b> 18K Gold and Sterling Silver \$595. <b>Classic Chain 8MM Knife Edge Link Necklace.</b> Sterling Silver \$1,295. <b>Classic Chain Sautoir Necklace.</b> Sterling Silver \$1,195. <b>Classic Chain 8MM Knife Edge Link Bracelet.</b> Sterling Silver \$695. <b>Classic Chain 7.5MM Reversible Bracelet.</b> 18K Gold and Sterling Silver \$3,300. <b>Asli Classic Chain Link 5MM Station Bracelet.</b> Sterling Silver with Diamond Pavé (0.3ct) \$1,195. <b>Tiga Classic Chain 8MM Bracelet.</b> Blackened Sterling Silver with Diamond Pavé (0.44ct) \$1,795. <b>Classic Chain 10.5MM Bracelet.</b> Sterling Silver with Black Sapphire \$1,295. <b>Tiga Classic Chain 8MM Bracelet.</b> Sterling Silver with Diamond Pavé (0.44ct) \$1,695. <b>Tiga Classic Chain 6.5MM Bracelet.</b> 18K Gold with Diamond Pavé (0.35ct) \$9,995. <b>Tiga Classic Chain 8MM Bracelet.</b> Sterling Silver with Black Sapphire \$895.
9	<b>Classic Chain Signet Ring.</b> Sterling Silver with Black Sapphire \$995. <b>Classic Chain 11MM Bracelet.</b> Sterling Silver and Damascus Steel \$1,795. <b>Tiga Classic Chain 8MM Bracelet.</b> Blackened Sterling Silver \$795. <b>Tiga Classic Chain 8MM Bracelet.</b> Sterling Silver \$750. <b>Tiga Classic Chain 8MM Bracelet.</b> Blackened Sterling Silver \$795. <b>Tiga Classic Chain 8MM Bracelet.</b> Sterling Silver \$750. <b>Classic Chain 11MM Reversible Bracelet.</b> Bronze and Sterling Silver \$995. <b>Classic Chain Bead Bracelet.</b> Sterling Silver with Tiger Iron, Smoky Quartz and Silver Calcite Beads \$395. <b>Classic Chain 11MM Bracelet.</b> Blackened Sterling Silver with Blue Sapphire \$1,295.
12	<b>Legends Eagle Wing Pendant Necklace.</b> Sterling Silver with Black Sapphire and Black Spinel \$895. <b>Asli Classic Chain Link 5MM Box Necklace.</b> Blackened Sterling Silver \$795. <b>Asli Classic Chain 10.5MM Link Bracelet.</b> Sterling Silver \$995. <b>Tiga Classic Chain 8MM Bracelet.</b> Blackened Sterling Silver \$795. <b>Asli Classic Chain Link 7MM Station Bracelet.</b> Sterling Silver on Black Leather \$595. <b>Tiga Classic Chain 8MM Bracelet.</b> Blackened Sterling Silver \$795. <b>Asli Classic Chain Link 7MM Bracelet.</b> Sterling Silver \$695.
13	<b>Classic Chain Silver Large Hoop Earrings.</b> Sterling Silver \$395. <b>Legends Naga Ring.</b> Brushed Sterling Silver with Black Spinel and Blue Sapphire \$695. <b>Classic Chain Choker Necklace.</b> Sterling Silver \$495. <b>Tiga Classic Chain 8MM Necklace.</b> Sterling Silver \$1,495. <b>Asli Classic Chain Link 10MM Necklace.</b> Sterling Silver \$1,495. <b>Asli Classic Chain Link Necklace.</b> Sterling Silver \$1,695. <b>Tiga Classic Chain 8MM Bracelet.</b> Sterling Silver with Black Sapphire \$895. <b>Classic Chain 7.5MM Bracelet.</b> Sterling Silver \$695. <b>Tiga Classic Chain 6.5MM Bracelet.</b> Sterling Silver with Black Sapphire \$695. <b>Classic Chain 7.5MM Bracelet.</b> Sterling Silver \$695. <b>Asli Classic Chain Link Station Bracelet.</b> Sterling Silver \$650. <b>Tiga Classic Chain 8MM Bracelet.</b> Sterling Silver \$695.
15	<b>Lahar Cuff.</b> Sterling Silver with White Diamond (0.81ct) and Grey Diamond (1.47ct) \$4,900.
16	<b>Lahar Dome Ring.</b> 18K Gold with White Diamond (0.2ct) and Grey Diamond (1.73ct) \$5,500. <b>Lahar Cuff.</b> 18K Gold with White Diamond (0.83ct), Grey Diamond (0.97ct) and Treated Black Diamond (0.3ct) \$22,000. <b>Tiga Classic Chain 6.5MM Bracelet.</b> 18K Gold with Diamond Pavé (0.35ct) \$9,995. <b>Lahar Cuff.</b> 18K Gold with White Diamond (0.14ct) and Grey Diamond (0.44ct) \$7,000.
17	<b>Lahar Stud Earrings.</b> 18K Gold with White Diamond (0.07ct), Grey Diamond (0.33ct) and Treated Black Diamond (0.12ct) \$1,495. <b>Lahar Pendant Necklace.</b> 18K Gold with White Diamond (0.15ct) and Grey Diamond (0.55ct) \$3,800. <b>Lahar Enhancer.</b> Sterling Silver with White Diamond (0.04ct) and Grey Diamond (0.77ct) \$1,495. <b>Lahar 10MM Band Ring.</b> Sterling Silver with White Diamond (0.04ct) and Grey Diamond (0.34ct) \$850. <b>Lahar Dome Ring.</b> 18K Gold with White Diamond (0.2ct) and Grey Diamond (1.73ct) \$5,500.
18	<b>Lahar Drop Earrings.</b> Sterling Silver with White Diamond (0.31ct) and Grey Diamond (0.79ct) \$1,895. <b>Lahar 5MM Station Bracelet.</b> Sterling Silver with White Diamond (0.07ct) and Grey Diamond (0.21ct) \$995. <b>Classic Chain 8MM Hinged Bangle.</b> Sterling Silver \$750. <b>Tiga Classic Chain 6.5MM Bracelet.</b> Sterling Silver with Diamond Pavé (0.35ct) \$1,395. <b>Tiga Classic Chain 8MM Bracelet.</b> Sterling Silver with Diamond Pavé (0.44ct) \$1,695. <b>Lahar Marquise Pendant Necklace.</b> Sterling Silver with White Diamond (0.19ct) and Grey Diamond (0.51ct) \$1,395. <b>Classic Chain Spear Long Pendant Necklace.</b> Hammered Sterling Silver \$595.
19	<b>Lahar Saddle Ring.</b> Sterling Silver with White Diamond (0.18ct) and Grey Diamond (0.74ct) \$1,595. <b>Lahar Bib Necklace.</b> Sterling Silver with White Diamond (0.65ct) and Grey Diamond (0.94ct) \$3,900.
20	<b>Dot Saddle Ring.</b> Sterling Silver \$495. <b>Dot Hoop Earrings.</b> Sterling Silver \$495. <b>Classic Chain Ring.</b> Hammered Sterling Silver \$450. <b>Dot Cuff.</b> 18K Gold and Sterling Silver \$1,695. <b>Classic Chain 10.5MM Bracelet.</b> Sterling Silver \$895. <b>Tiga Classic Chain 6.5MM Bracelet.</b> Sterling Silver \$495. <b>Dot Cuff.</b> Sterling Silver \$1,200.
21	<b>Dot Earrings.</b> Hammered 18K Gold and Sterling Silver \$1,695. <b>Classic Chain Choker Necklace.</b> Sterling Silver \$495. <b>Classic Chain 3.5MM Woven Necklace.</b> Sterling Silver, Length 72" \$1,475. <b>Dot Moon Phase Station Necklace.</b> Hammered Sterling Silver \$895. <b>Tiga Classic Chain 6.5MM Necklace.</b> 18K Gold \$22,000. <b>Asli Classic Chain Link 5MM Station Bracelet.</b> 18K Gold \$5,500. <b>Asli Classic Chain Link Station Bracelet.</b> 18K Gold and Sterling Silver \$1,495. <b>Classic Chain 7.5MM Bracelet.</b> Sterling Silver \$695.

22	<b>Classic Chain Keris Dagger Ring.</b> 18K Gold and Sterling Silver with Damascus Steel \$1,495. <b>Classic Chain 8MM Band Ring.</b> Sterling Silver \$295. <b>Classic Chain Keris Dagger Necklace.</b> 18K Gold and Sterling Silver with Damascus Steel \$2,200. <b>Classic Chain Wrap Bracelet.</b> 18K Gold and Sterling Silver on Brown Leather with Smoky Quartz, Pyrite, Black Volcanic and Tiger Iron Beads \$1,495. <b>Classic Chain 11MM Bracelet.</b> Sterling Silver \$975. <b>Asli Classic Chain Link Station Bracelet.</b> Sterling Silver on Black Leather \$495. <b>Classic Chain 11MM Bracelet.</b> Blackened Sterling Silver \$995. <b>Classic Chain Bead Bracelet.</b> Sterling Silver with Black Volcanic Beads \$395. <b>Classic Chain 6MM Bead Bracelet.</b> Sterling Silver with Dragon Blood Jasper Beads \$395.
26	<b>Classic Chain Sugarloaf Drop Earrings.</b> Hammered 18K Gold and Sterling Silver \$695. <b>Classic Chain Knife Edge Ring.</b> Sterling Silver \$395. <b>Classic Chain Spear Long Pendant Necklace.</b> Hammered Silver \$595. <b>Classic Chain Knife Edge 15.5MM Hinged Bangle.</b> Sterling Silver \$995. <b>Tiga Classic Chain 8MM Bracelet.</b> Sterling Silver \$695. <b>Tiga Classic Chain 6.5MM Bracelet.</b> Sterling Silver with Black Sapphire \$695. <b>Classic Chain Flex Cuff.</b> Hammered 18K Gold and Sterling Silver \$695. <b>Classic Chain Flex Cuff.</b> Hammered Sterling Silver \$495.
27	<b>Classic Chain Spear Linear Earrings.</b> Sterling Silver \$350. <b>Legends Naga Two Finger Ring.</b> Brushed Sterling Silver with Black Spinel and Blue Sapphire \$695. <b>Tiga Classic Chain 8MM Necklace.</b> Sterling Silver \$1,495.
28	<b>Asli Classic Chain Link 10MM Band Ring.</b> Sterling Silver \$495. <b>Classic Chain 8MM Band Ring.</b> Sterling Silver \$295. <b>Chain Jawan 10MM Band Ring.</b> 18K Gold and Blackened Sterling Silver \$695. <b>Classic Chain 8MM Band Ring.</b> 18K Gold \$2,600. <b>Modern Chain 9MM Band Ring.</b> Sterling Silver with Black Sapphire and Black Spinel \$495. <b>Classic Chain 10MM Band Ring.</b> Sterling Silver with Black Sapphire and Black Spinel \$695. <b>Classic Chain 9MM Band Ring.</b> Sterling Silver with Diamond (0.68ct) \$1,995. <b>Classic Chain Keris Dagger 7MM Band Ring.</b> 18K Gold and Sterling Silver \$595.
29	<b>Classic Chain Keris Dagger 7MM Band Ring.</b> Sterling Silver \$395. <b>Classic Chain Keris Dagger Ring.</b> 18K Gold and Sterling Silver with Damascus Steel \$1,795. <b>Classic Chain 11MM Bracelet.</b> 18K Gold and Blackened Sterling Silver \$2,200. <b>Classic Chain Multi Wrap Bracelet.</b> 18K Gold and Sterling Silver on Brown Leather with Smoky Quartz, Pyrite, Black Volcanic and Tiger Iron Beads \$1,495. <b>Asli Classic Chain 7MM Link Bracelet.</b> 18K Gold \$6,900.
30	<b>Tiga Classic Chain Overlap Ring.</b> 18K Gold \$2,495. <b>Asli Classic Chain Link 9.5MM Necklace.</b> 18K Gold \$23,000. <b>Dot Station Necklace.</b> Hammered 18K Gold with Diamond Pavé (0.37ct) \$4,500. <b>Classic Chain 2.5MM Band Ring.</b> 18K Gold \$895. <b>Dot 9MM Band Ring.</b> Hammered 18K Gold and Sterling Silver \$395. <b>Dot Ring.</b> 18K Gold with Diamond Pavé (0.05ct) \$695. <b>Dot Ring.</b> Hammered 18K Gold \$795. <b>Dot Ring.</b> 18K Gold with Diamond Pavé (0.06ct) \$895. <b>Classic Chain 7MM Knife Edge Link Bracelet.</b> 18K Gold \$5,200. <b>Tiga Classic Chain 6.5MM Bracelet.</b> 18K Gold with Diamond Pavé (0.35ct) \$9,995.
31	<b>Classic Chain Spear Bib Necklace.</b> Hammered Sterling Silver \$2,395. <b>Classic Chain 10.5MM Bracelet.</b> Sterling Silver \$895. <b>Tiga Classic Chain 8MM Bracelet.</b> Blackened Sterling Silver with Diamond Pavé (0.44ct) \$1,795. <b>Classic Chain 6.5MM Bracelet.</b> Sterling Silver with Black Sapphire \$595. <b>Tiga Classic Chain 6.5MM Bracelet.</b> Blackened Sterling Silver with Diamond Pavé (0.35ct) \$1,495. <b>Classic Chain 10.5MM Bracelet.</b> Sterling Silver with Black Sapphire \$1,295. <b>Tiga Classic Chain 8MM Bracelet.</b> Sterling Silver with Diamond Pavé (0.44ct) \$1,695. <b>Classic Chain 7.5MM Bracelet.</b> Sterling Silver \$695. <b>Classic Chain 3.5MM Woven Necklace.</b> Sterling Silver, Length 72" \$1,475.
32	<b>Tiga Classic Chain Overlap Ring.</b> Sterling Silver \$450. <b>Classic Chain Knife Edge Ring.</b> Sterling Silver \$395. <b>Classic Chain Saddle Ring.</b> Hammered Sterling Silver with Diamond Pavé (0.27ct) \$995. <b>Legends Naga Ring.</b> Brushed Sterling Silver with Black Spinel and Blue Sapphire \$695. <b>Tiga Classic Chain Overlap Ring.</b> 18K Gold \$2,495. <b>Classic Chain Knife Edge Ring.</b> Sterling Silver with Diamond Pavé (0.35ct) and Rutilated Quartz \$1,595. <b>Bamboo 14MM Band Ring.</b> Sterling Silver with Black Sapphire and Black Spinel \$495.
33	<b>Classic Chain Ring.</b> Hammered 18K Gold and Sterling Silver \$995. <b>Asli Classic Chain Link 6MM Band Ring.</b> Sterling Silver \$350. <b>Classic Chain 3.5MM Band Ring.</b> Hammered 18K Gold and Sterling Silver \$495. <b>Classic Chain Knife Edge Ring.</b> Sterling Silver with Diamond Pavé (0.35ct) and Rutilated Quartz \$1,595.
Back Cover	<b>Lahar Dome Ring.</b> Sterling Silver with White Diamond (0.04ct) and Grey Diamond (0.52ct) \$1,150. <b>Lahar 10MM Band Ring.</b> Sterling Silver with White Diamond (0.04ct) and Grey Diamond (0.34ct) \$850. <b>Lahar Cuff.</b> Sterling Silver with White Diamond (0.41ct) and Grey Diamond (0.65ct) \$2,695. <b>Lahar Cuff.</b> Sterling Silver with White Diamond (0.81ct) and Grey Diamond (1.47ct) \$4,900. <b>Lahar Drop Earrings.</b> Sterling Silver with White Diamond (0.31ct) and Grey Diamond (0.79ct) \$1,895.



# JOHN HARDY

EST BALI 1975

